

# PP-FW75-01

# Single or Double Metal Socket Box in a flexible wall (75mm or thicker)

This standard detail is intended for general information only and all details should be checked against all relevant supporting test evidence, certification and installation guides. In line with the Company's policy of continual development, details are subject to change. Care should be taken to ensure this is the latest published detail and instructions.

**Additional Instructions**

Flexible walls (Insulated or Uninsulated) to have a minimum 50mm wide metal or timber stud and minimum 1no. layer of 12.5mm Gypsum boards in accordance with EN 520 or Calcium Silicate boards which are CE Marked based on an ETA on both sides of the stud. For timber stud walls there shall be a minimum distance of 100mm from the penetration seal to any timber stud and the void between the stud and seal shall be filled with a minimum 100mm depth of Class A1 or A2 insulation.

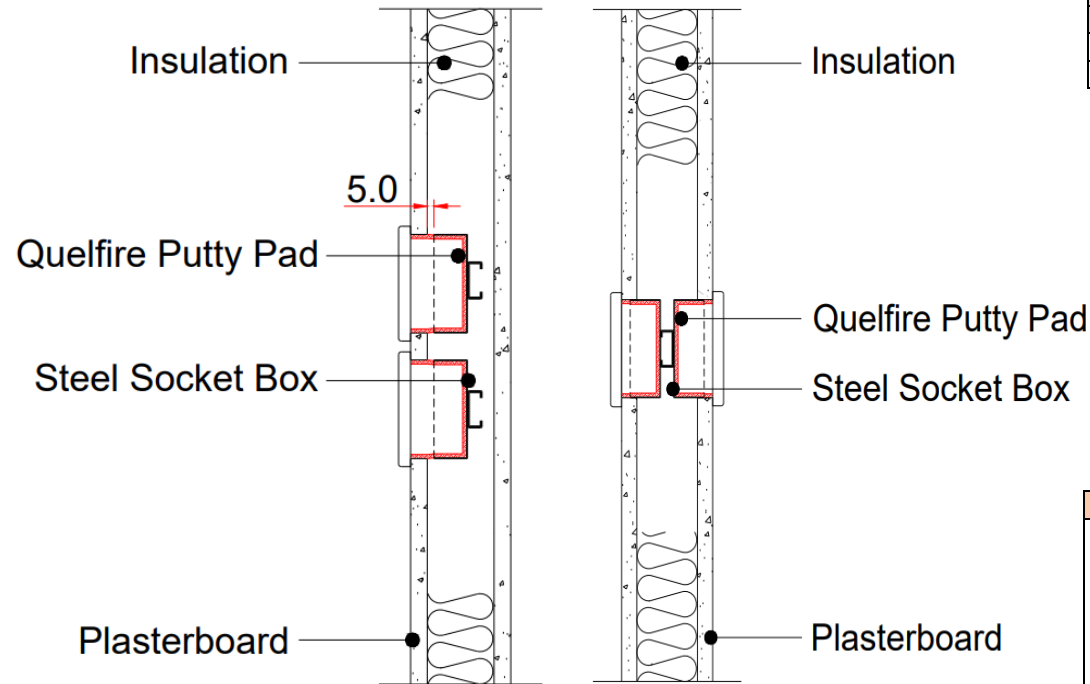
Metal electrical socket box installed in accordance with manufacturers recommendations and secured to proprietary support system and fitted to a steel caddy.

The plasterboard should be cut tight around the metal electrical socket box, and the [BeadMaster](#) product may also be used with the socket boxes where practically possible.

Metal socket boxes with a depth  $\leq 25\text{mm}$  are suitable, and metal extension frames can be used to extend the metal socket box to the front face of the wall, as long as the overall depth is no greater than 42.5mm from the front face of the plasterboard wall.

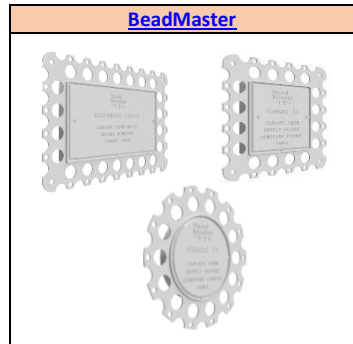
A gap  $\leq 5\text{mm}$  between the electrical socket box and back of the fire rated plasterboard is tolerable. PVA glue is used on the exposed raw edges of the plasterboard layers before fitting the Quelfire Intumescent Acoustic Putty Pad. The Quelfire Intumescent Acoustic Putty Pad is extended (using additional material/offcuts) to sit flush with the front face of the plasterboard wall ensuring a  $\geq 3\text{mm}$  thickness is maintained.

Follow the installation steps referenced in the [Quelfire Putty Pad Installation Instructions](#) guidance document.



Quelfire Products Required	
Product Code	Description
PUTPAD-S	<a href="#">Single Putty Pad</a>
PUTPAD-D	<a href="#">Double Putty Pad</a>

Socket Type	Page No.
Metal Caddy	1
Box Strap	2



Service Type	Service Size**	Aperture Size	Wall Positions	Minimum distance between multiple sockets on same side	Classification
Single Socket (1 Gang)	72mm wide 72mm high $\leq 25\text{mm}$ Depth	75mm wide 75mm high	Offset	20mm	E 60 EI 45
			Back to Back	100mm	
Double Socket (2 Gang)	132mm wide 72mm high $\leq 25\text{mm}$ Depth	135mm wide 75mm high	Offset	20mm	
			Back to Back	100mm	

**\*\*As per BS EN 1366-3:2021 Section 13.6.3, the services can be a circular shape equal to or less than the area tested.**

To be read in conjunction with:	<a href="#">UL-EU-01308-EN Issue 2</a> Pages 4, 5 & 6
Test & Classification standard:	BS EN1366-3 & EN13501-2
Substrate minimum thickness:	75mm
Drawing Scale:	Not to Scale
Issue Number:	3
Date of Issue:	October 2024
Detail Reference:	PP-FW75-01

**Important Information:**

- The supporting construction must be installed in accordance with the manufacturer's guidelines and must be capable of achieving the required fire rating of the firestop.
- All services should be adequately supported on both sides of the firestop to ensure that no load is transferred onto the firestop seal.

**Scope and Liability:**

- Any Information provided by or on behalf of Quelfire Limited is provided for general information only. It is not intended to amount to advice on which you should rely. You must obtain professional or specialist advice before taking, or refraining from, any recommendation or action.
- The summary is not exhaustive and does not consider all issues relevant to the enquiry. It is limited to the information and time available to us. We have not verified any information made available to us by you or any other source, nor have we carried out a physical inspection of any property. We make no representations, warranties or guarantees, whether expressed or implied, that any information is accurate, complete or up to date.
- We do not accept a duty of care to you or any other person in respect of the enquiry, nor do we accept any liability to you or any other person for any loss arising out of or in connection with the enquiry or any reply provided by us. Different limitations and exclusions of liability arising as a result of the supply of any products or services by us to you, and these will be set out in our terms and conditions of supply, a copy of which is available on request.
- Full terms and conditions of sale are available at <https://www.quelfire.co.uk/terms-conditions-of-sale/>

# PP-FW75-01

## Single or Double Metal Socket Box in a flexible wall (75mm or thicker)

This standard detail is intended for general information only and all details should be checked against all relevant supporting test evidence, certification and installation guides. In line with the Company's policy of continual development, details are subject to change. Care should be taken to ensure this is the latest published detail and instructions.

**Additional Instructions**

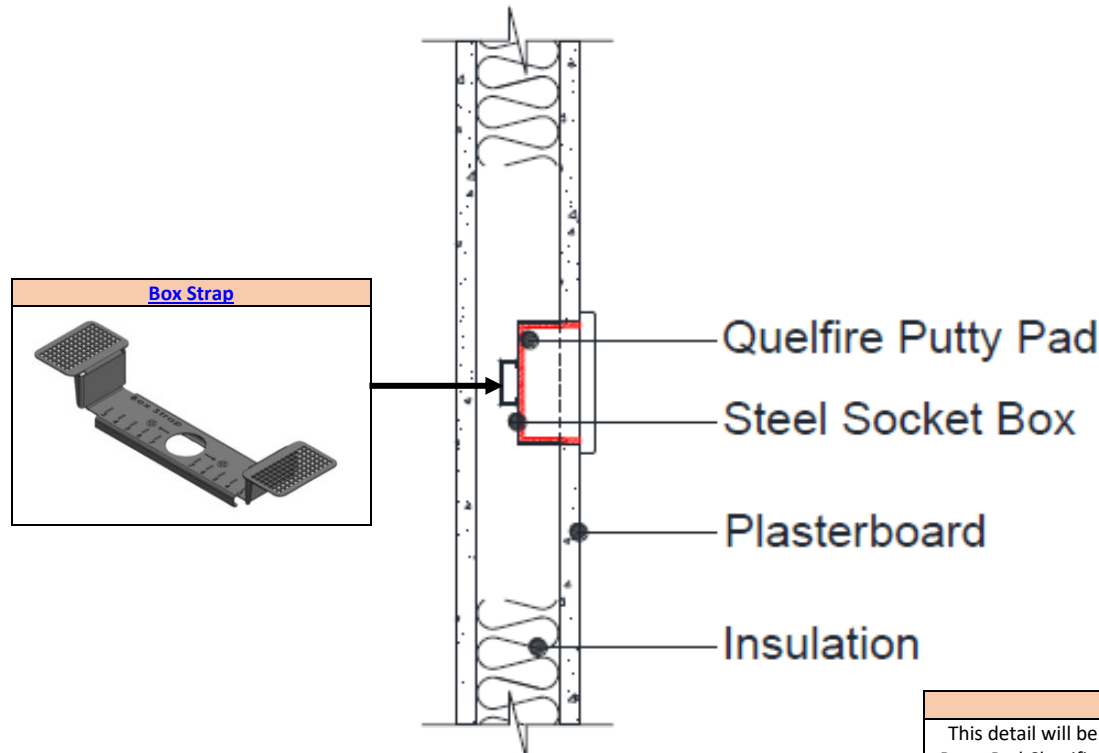
Flexible walls (Insulated or Uninsulated) to have a minimum 50mm wide metal or timber stud and minimum 1no. layer of 12.5mm Gypsum boards in accordance with EN 520 or Calcium Silicate boards which are CE Marked based on an ETA on both sides of the stud. For timber stud walls there shall be a minimum distance of 100mm from the penetration seal to any timber stud and the void between the stud and seal shall be filled with a minimum 100mm depth of Class A1 or A2 insulation.

Metal electrical socket box installed in accordance with manufacturers recommendations and secured to the Plasterboard using the [Box Strap System](#) using 35mm long x 3.5mm diameter jack-point screws.

The plasterboard should be cut tight around the metal electrical socket box, and the [BeadMaster](#) product may also be used with the socket boxes where practically possible.

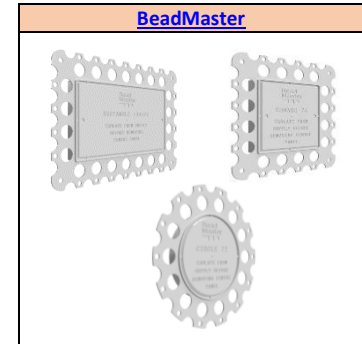
Metal socket boxes with a depth ≤25mm are suitable.

Follow the installation steps referenced in the [Quelfire Putty Pad Installation Instructions](#) guidance document.



Quelfire Products Required	
Product Code	Description
PUTPAD-S	<a href="#">Single Putty Pad</a>
PUTPAD-D	<a href="#">Double Putty Pad</a>

Socket Type	Page No.
Metal Caddy	1
<b>Box Strap</b>	<b>2</b>



**\*\* Test Evidence**

This detail will be included in a future update of the Quelfire Putty Pad Classification Report. The fire test report detailed is not for general distribution but can be requested by the projects qualified fire consultant / engineer by contacting the Quelfire Technical Team directly.

Service Type	Service Size**	Aperture Size	Wall Positions	Minimum distance between multiple sockets on same side	Fire Rating
Single Socket (1 Gang)	72mm wide 72mm high ≤25mm Depth	75mm wide 73mm high	Offset	100mm	E 60
Double Socket (2 Gang)	132mm wide 72mm high ≤25mm Depth	135mm wide 73mm high			EI 45

<b>To be read in conjunction with:</b>	WF 541416 Specimen I1 & I2**
<b>Test standard:</b>	BS EN1366-3
<b>Substrate minimum thickness:</b>	75mm
<b>Drawing Scale:</b>	Not to Scale
<b>Issue Number:</b>	3
<b>Date of Issue:</b>	October 2024
<b>Detail Reference:</b>	PP-FW75-01

**Important Information:**

- The supporting construction must be installed in accordance with the manufacturer's guidelines and must be capable of achieving the required fire rating of the firestop.
- All services should be adequately supported on both sides of the firestop to ensure that no load is transferred onto the firestop seal.

**Scope and Liability:**

- Any Information provided by or on behalf of Quelfire Limited is provided for general information only. It is not intended to amount to advice on which you should rely. You must obtain professional or specialist advice before taking, or refraining from, any recommendation or action.
- The summary is not exhaustive and does not consider all issues relevant to the enquiry. It is limited to the information and time available to us. We have not verified any information made available to us by you or any other source, nor have we carried out a physical inspection of any property. We make no representations, warranties or guarantees, whether expressed or implied, that any information is accurate, complete or up to date.
- We do not accept a duty of care to you or any other person in respect of the enquiry, nor do we accept any liability to you or any other person for any loss arising out of or in connection with the enquiry or any reply provided by us. Different limitations and exclusions of liability arising as a result of the supply of any products or services by us to you, and these will be set out in our terms and conditions of supply, a copy of which is available on request.
- Full terms and conditions of sale are available at <https://www.quelfire.co.uk/terms-conditions-of-sale/>