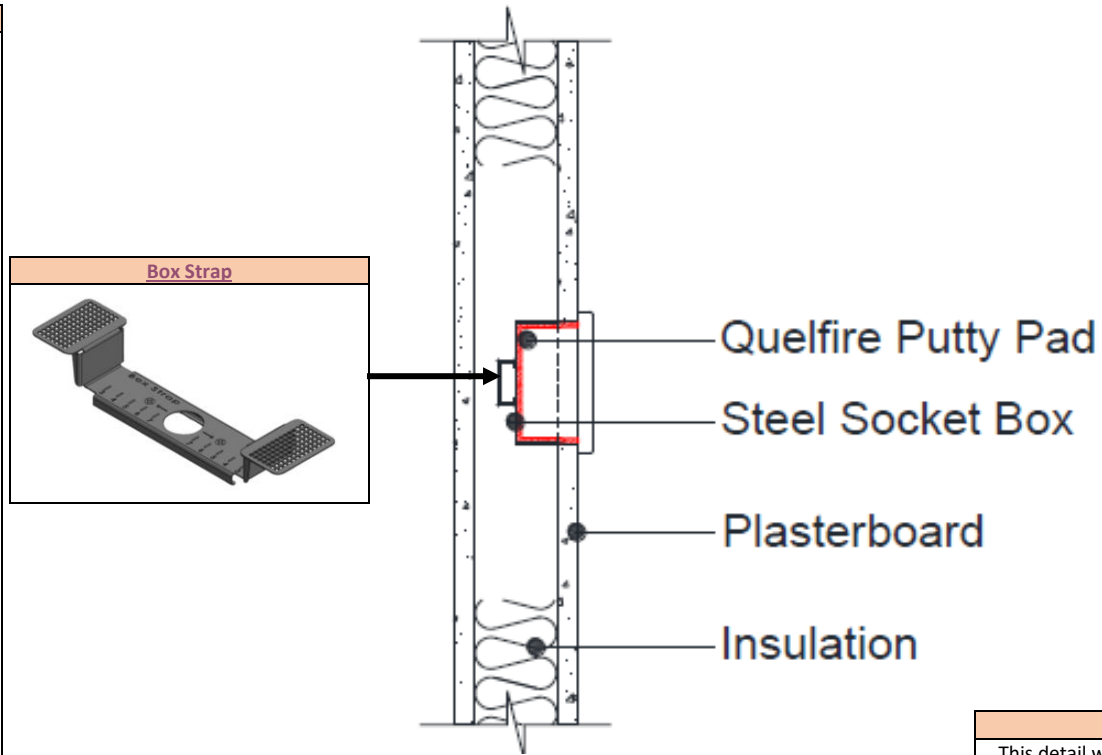


PP-FW119-01

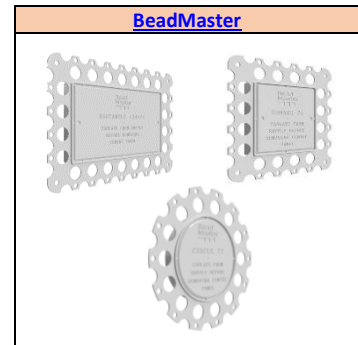
Single or Double Metal Socket Box in a flexible wall (119mm or thicker)

This standard detail is intended for general information only and all details should be checked against all relevant supporting test evidence, certification and installation guides. In line with the Company's policy of continual development, details are subject to change. Care should be taken to ensure this is the latest published detail and instructions.

Additional Instructions
<p>Non-load bearing flexible walls (Insulated or Uninsulated) to have a minimum 89mm deep x 38mm wide softwood timber stud and minimum 1no. layer of 15mm Gypsum boards in accordance with EN 520 or Calcium Silicate boards which are CE Marked based on an ETA on both sides of the stud.</p> <p>Metal electrical socket box installed in accordance with manufacturers recommendations and secured to the plasterboard using the Box Strap System using 35mm long x 3.5mm diameter jack-point screws.</p> <p>The plasterboard should be cut tight around the metal electrical socket box, and the BeadMaster product may also be used with the socket boxes where practically possible.</p> <p>Metal socket boxes with a depth ≤25mm are suitable.</p> <p>Follow the installation steps referenced in the Quelfire Putty Pad Installation Instructions guidance document.</p> <p>Load Bearing Walls: Further consideration by the project fire and structural engineer is necessary when considering penetration seals to ensure the studwork is adequately protected from a structural perspective. BS EN 1366-3 testing does not review, or provide an R (load bearing) fire resistance rating.</p> <p>Quelfire have however included additional thermocouples within the wall cavity around the penetration when testing to record cavity temperatures for specialist engineers to review.</p>



Quelfire Products Required	
Product Code	Description
PUTPAD-S	Single Putty Pad
PUTPAD-D	Double Putty Pad



**** Test Evidence**

This detail will be included in a future update of the Quelfire Putty Pad Classification Report. The fire test report detailed is not for general distribution but can be requested by the projects qualified fire consultant / engineer by contacting the Quelfire Technical Team directly.

Service Type	Service Size	Aperture Size	Wall Positions	Timber Stud position	Fire Rating
Single Socket (1 Gang)	72mm wide 72mm high ≤25mm Depth	73mm wide 73mm high	Offset	≥0mm	E 60 EI 60
Double Socket (2 Gang)	132mm wide 72mm high ≤25mm Depth	135mm wide 73mm high			

To be read in conjunction with:	WF 539798/R Specimens D1 & D2**
Test standard:	BS EN1366-3
Substrate minimum thickness:	100mm
Drawing Scale:	Not to Scale
Issue Number:	1
Date of Issue:	October 2024
Detail Reference:	PP-FW119-01

Important Information:

- The supporting construction must be installed in accordance with the manufacturer's guidelines and must be capable of achieving the required fire rating of the firestop.
- All Services should be adequately supported either side of the firestop to ensure that no load is transferred onto the firestop seal.

Scope and Liability:

- Any Information provided by or on behalf of Quelfire Limited is provided for general information only. It is not intended to amount to advice on which you should rely. You must obtain professional or specialist advice before taking, or refraining from, any recommendation or action.
- The summary is not exhaustive and does not consider all issues relevant to the enquiry. It is limited to the information and time available to us. We have not verified any information made available to us by you or any other source, nor have we carried out a physical inspection of any property. We make no representations, warranties or guarantees, whether expressed or implied, that any information is accurate, complete or up to date.
- We do not accept a duty of care to you or any other person in respect of the enquiry, nor do we accept any liability to you or any other person for any loss arising out of or in connection with the enquiry or any reply provided by us. Different limitations and exclusions of liability arising as a result of the supply of any products or services by us to you, and these will be set out in our terms and conditions of supply, a copy of which is available on request.
- Full terms and conditions of sale are available at <https://www.quelfire.co.uk/terms-conditions-of-sale/>