

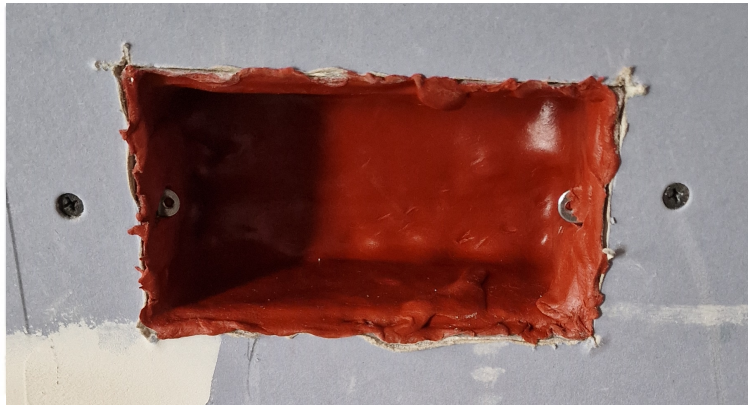


CP 617 FIRESTOP PUTTY PAD- BOX STRAP INSTALLATION GUIDE

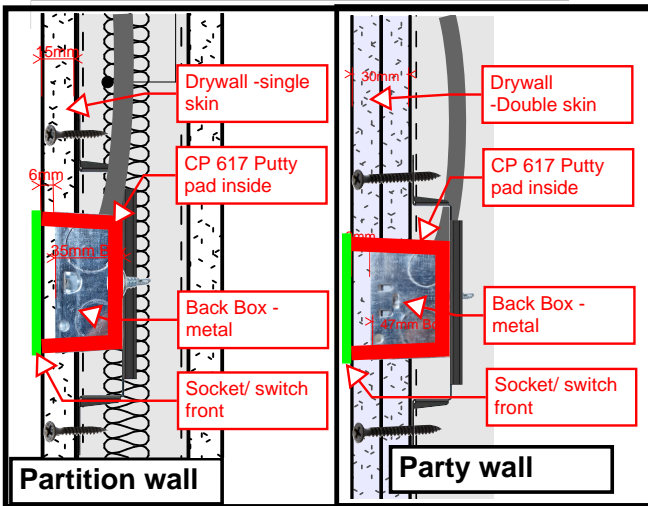
Notes:

When installing the putty pad:

1. The back box is cleaned
2. Use a retractable knife to cut any excess material
3. Do not stretch the putty pad
4. Seal all the gaps between drywall and the back box



CP617 putty pad inside the box



CP617 putty pad outside the box

