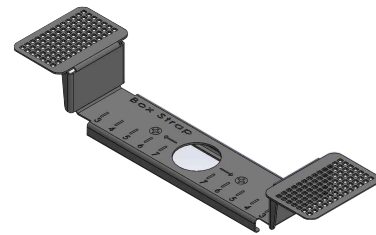




Reduce your carbon footprint by **2,843kg** of CO2 across 200 apartments by Using our Alternative Bracket.

On average, every metric ton of steel produced led to 1.85 metric tons of CO2 released into the atmosphere in 2020



| | |
|--------------------|--------------------------------|
| Brand | Generic |
| Type | Telescopic Bracket |
| Dimensions | L 440 mm x W 26 mm x D 13.8 mm |
| Material Thickness | 0.6mm |
| Material | Pre Galvanised steel |
| Packeging type | Bundle of 50 units |
| Weight | 0.28kg |
| Steel reduction | N/A |
| CO2 emissions | 0.518kg CO2 |

| | |
|--------------------|------------------------------|
| Brand | Box Strap |
| Type | Double Box |
| Dimensions | H 34 mm x W 50 mm x L 207 mm |
| Material Thickness | 1mm |
| Material | Pre Galvanised steel |
| Packeging type | Bundle of 50 units |
| Weight | 0.082kg |
| Steel Reduction | 70.7% |
| CO2 emissions | 0.152kg CO2 |

- On average, 35 brackets are used in every new build property in the UK construction industry.
- By using the Box Strap bracket, which is the lighter and smaller bracket, we are able to save approximately 12.81 kg of CO2 emissions for each new build property in the UK
- Using the Box Strap bracket also has other impacts in the fight to lower CO2 emissions that we haven't taken into consideration, such as:
 - Transportation: The lighter weight and the size of the bracket means that more pallets can be transported in one trip.
 - Storage: The smaller size of the bracket means that it takes up less space in storage
 - Packaging: The smaller size of the bracket also means that less cardboard is required for packaging, reducing the amount of waste generated and the associated CO2 emissions.
 - Manufacturing in the UK: It contributes to lower CO2 emissions, it reduces the need for long distance transportation, resulting in reduced carbon emissions associated with shipping and logistics.

Overall, using the Box Strap bracket not only reduces CO2 emissions during production, but also has additional benefits that contribute to a more sustainable construction industry.