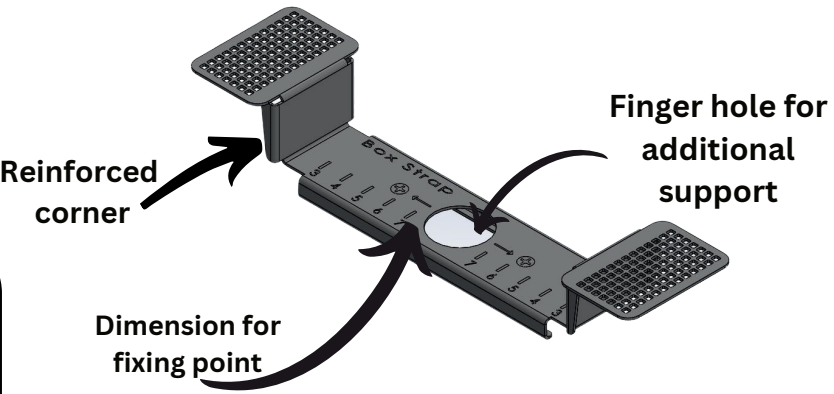
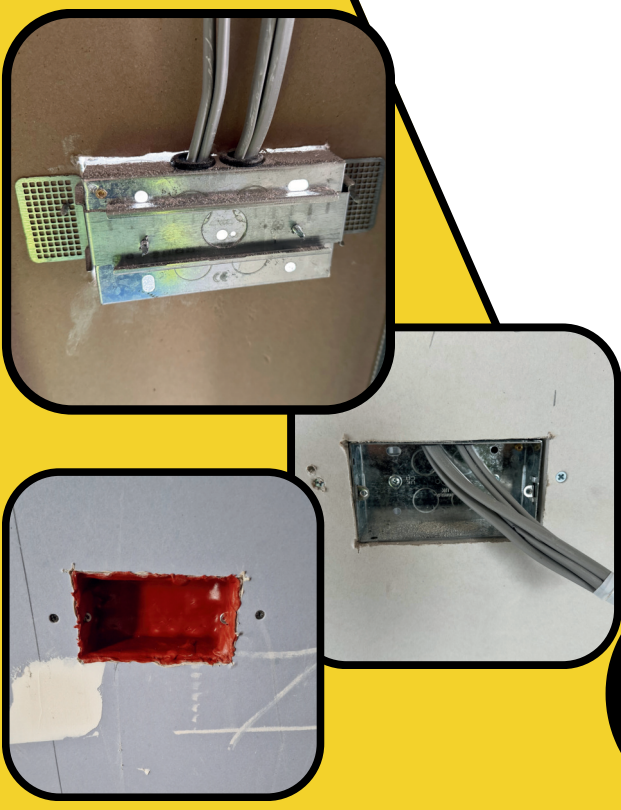


**Perfect Your Installation:** Opt for Our Box Strap Brackets to Achieve a Seamless Finish When Installing Metal Back Boxes for Your Clients



**BENEFITS OF THE BOX STRAP BRACKET FOR ELECTRICIANS**

- It removes all the unwanted earth parallel paths during testing for an EIC
- Metal boxes allow you to have a flush finish every time
- You can now install a metal back box with both sides of the wall boarded
- Faster and smoother installation process
- Hilti Fire stop putty pad CP617 compatibility

**BENEFITS OF THE BOX STRAP BRACKET FOR DRYLINERS**

- Build baffle boxes with no clashes
- Close your walls without cutting around back boxes
- Reduce making good

Our Box Strap brackets have been strength tested for single layer and double layer plasterboard. Please refer to our website for more info.



Installation guide



SHARE ME

# Downside of using a dry lining box

The frame prevents the electrical switch gear to have a flush finish with the finished wall



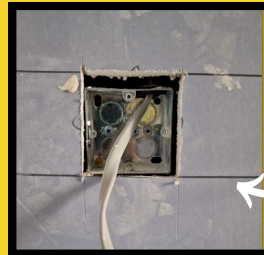
With constant usage, overtime these lugs bend backwards making the socket become loose

# The drawbacks of the traditional telescopic bracket installation methods

Causes small noticeable bows on finished walls



Clashes with baffle box details



Pencil lines shown here are attempts from the dry-liner to cut around the back box on a party wall.



Gaps between back box and finished wall are common as it is difficult for a dry-liner to cut around multiple back boxes



## INSTALLATION FINISH WHEN USING OUR BOX STRAP BRACKET

